



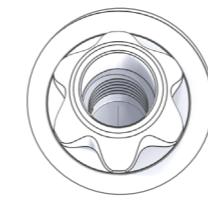
# PRODUCT CATALOG

# TLI™ Tissue Level Implant

Building on fifteen years of exceptional clinical success with our MPI Implant System, Ditrón Dental has introduced the TLI, Tissue Level Implant System. Developed in close collaboration with leading dental surgeons, the TLI system is designed to meet the most demanding clinical, biological, and aesthetic standards in modern implantology.

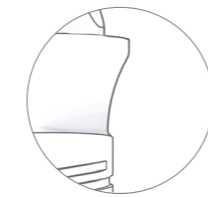
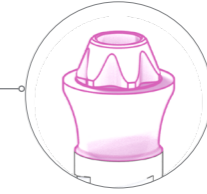
The TLI implant represents an innovative monoblock design, seamlessly integrating the proven performance of the MPI implant with an advanced transgingival neck. This enables one-step surgical procedures, simplifying treatment protocols and improving outcomes for both clinicians and patients.

By combining reliability, ease of use, and aesthetic versatility, the TLI Implant System sets a new benchmark for excellence in tissue-level implant technology.



Six anti-rotational repositioning facets allow the use of crown or bridge TLI prosthetics.

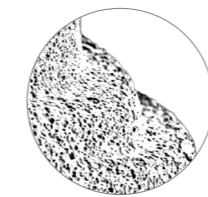
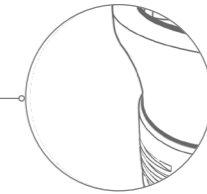
pink anodized surface enhances aesthetic integration with the soft tissue.



### Transgingival Neck

The TLI Tissue Level implant features a transgingival neck designed to facilitate one-step surgery and preservation of peri-implant health.

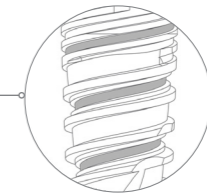
Epicrestal level placement including a beveled collar shifting the implant abutment junction inward, in order to achieve platform-switching configuration.



**Molecular Precision Surface Treatment**  
SLA based osseointegration.

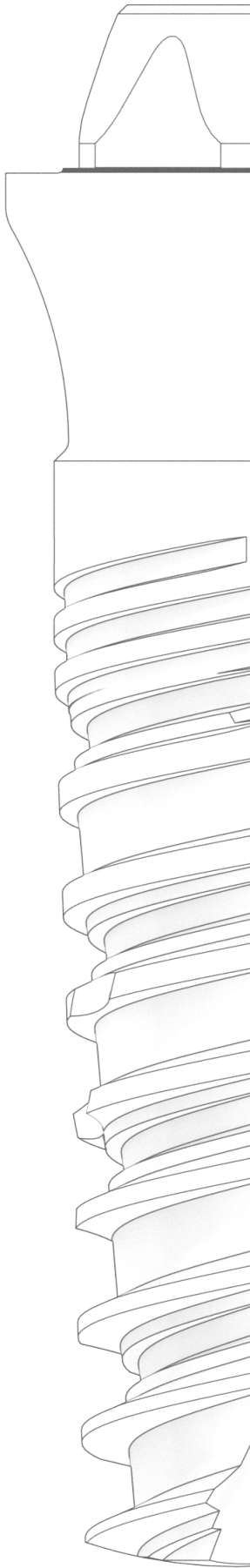
### Assisted Osseointegration

The unique Spherical Helix Chamber creates a localized structure that acts as a scaffold, promoting wound healing and bone formation through existing osteoblasts.

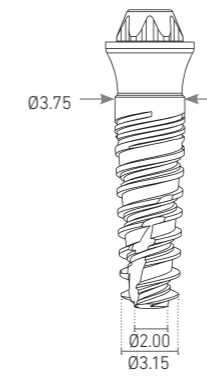
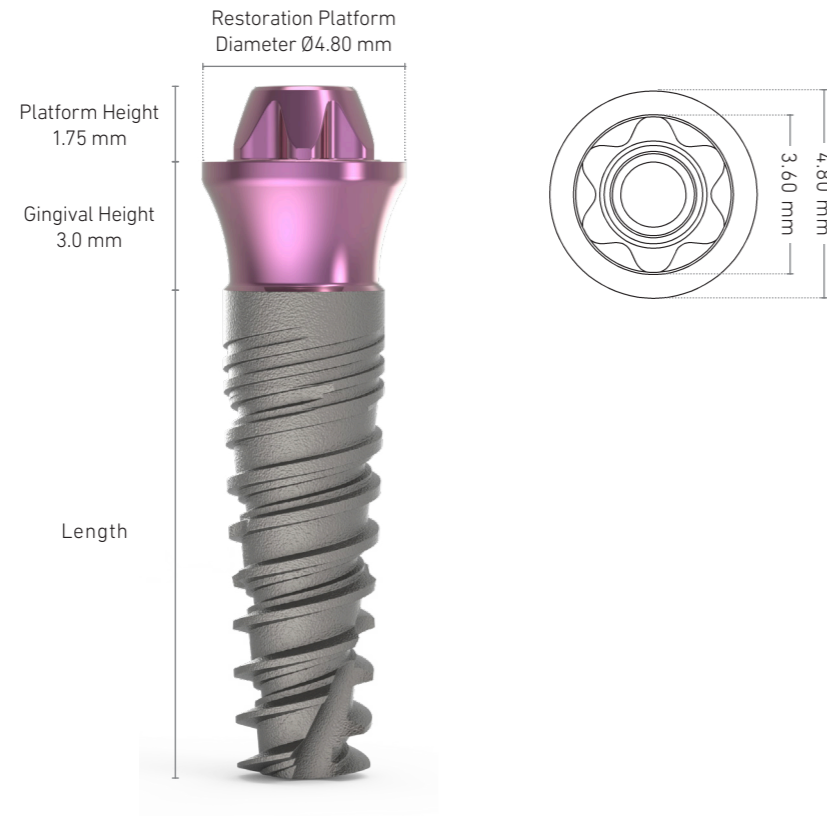


### Cutting Apex Edge

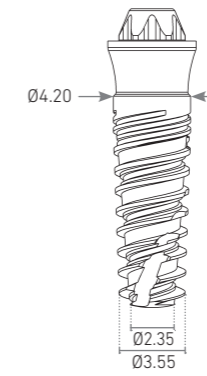
Provides self-drilling and self-tapping capacity to the implant.



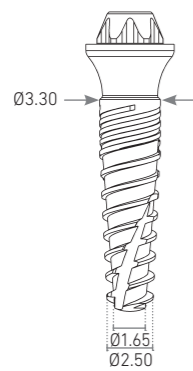
# Dimensions



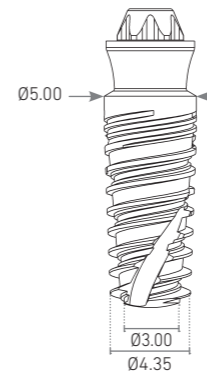
Diameter	Length (mm)	Catalog No.
Ø3.75	8	TLI-37508
	10	TLI-37510
	11.5	TLI-37511
	13	TLI-37513
	16	TLI-37516



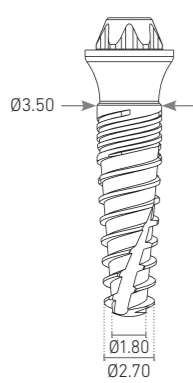
Diameter	Length (mm)	Catalog No.
Ø4.2	6	TLI-42006
	8	TLI-42008
	10	TLI-42010
	11.5	TLI-42011
	13	TLI-42013
	16	TLI-42016



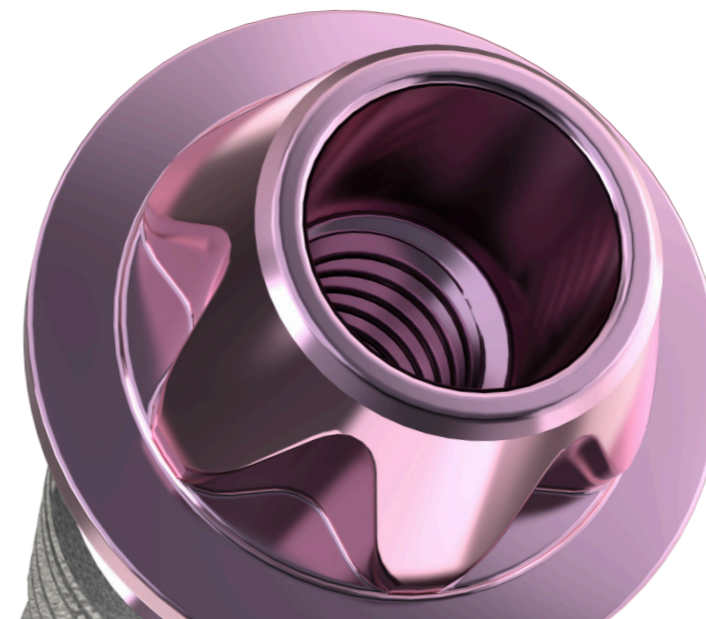
Diameter	Length (mm)	Catalog No.
Ø3.30	8	TLI-33008
	10	TLI-33010
	11.5	TLI-33011
	13	TLI-33013
	16	TLI-33016



Diameter	Length (mm)	Catalog No.
Ø5.00	6	TLI-50006
	8	TLI-50008
	10	TLI-50010
	11.5	TLI-50011
	13	TLI-50013
	16	TLI-50016



Diameter	Length (mm)	Catalog No.
Ø3.50	8	TLI-35008
	10	TLI-35010
	11.5	TLI-35011
	13	TLI-35013
	16	TLI-35016



## Drill Sequence

### Ø3.30 mm

	Ø1.9	Ø2.0	Ø2.8
Soft Bone	✓ 1200-1500	● 500-700	●
Hard Bone	✓ 1200-1500	● 500-700	● 200-400

### Ø3.50 mm

	Ø1.9	Ø2.0	Ø2.8	Ø3.2
Soft Bone	✓ 1200-1500	● 900-1200	● 500-700	●
Hard Bone	✓ 1200-1500	● 900-1200	● 500-700	● 200-400

### Ø3.75 mm

	Ø1.9	Ø2.0	Ø2.8	Ø3.2
Soft Bone	✓ 1200-1500	● 900-1200	● 500-700	●
Hard Bone	✓ 1200-1500	● 900-1200	● 500-700	● 200-400

### Ø4.2 mm

	Ø1.9	Ø2.0	Ø2.8	Ø3.2	Ø3.8
Soft Bone	✓ 1200-1500	● 900-1200	● 500-700	● 400-700	●
Hard Bone	✓ 1200-1500	● 900-1200	● 500-700	● 400-700	● 200-400

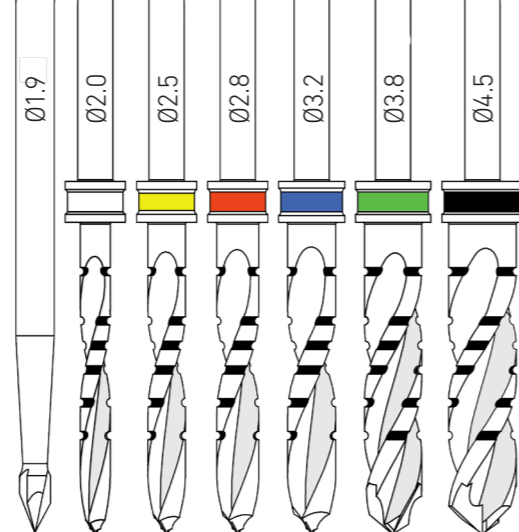
### Ø5.0 mm

	Ø1.9	Ø2.0	Ø2.8	Ø3.2	Ø3.8	Ø4.5
Soft Bone	✓ 1200-1500	● 900-1200	● 500-700	● 400-700	● 400-600	●
Hard Bone	✓ 1200-1500	● 900-1200	● 500-700	● 400-700	● 400-600	● 200-400

For all drill sequences based on bone type, an additional 1 mm should be added to the drill length to accommodate the angled cutting tip.

In hard bone (D-I, D-II), use new drills and abundant irrigation. Countersink Drill should be used if the standard hard bone protocol is insufficient to fully seat the implant without exceeding the recommended maximum insertion torque. For implants Ø3.3 and Ø3.5, do not exceed 45N-cm. For implants Ø3.75 and above, do not exceed 70N-cm.

**The procedure recommended by Ditrion Dental cannot replace the surgeon's judgment and experience.**



## TLI™ prosthetics and tools

### TLI Impression Coping

#### Transfer



TLI-TR600 Open tray impression post, bridge

TLI-TR650 Open tray impression post, crown

#### Analog



TLI-AN500 Implant analog

## Scan Abutment



TLI-SB480B Tissue Level Scan Abutment

## TLI Healing Cap



**Catalog No.**      **Gingiva Height**

TLI-HC350      3.5 mm

TLI-HC450      4.5 mm

TLI-HC550      5.5 mm

## TLI Liberator



**Catalog No.**      **Gingiva Height**

TLI-LIB20      2 mm

TLI-LIB30      3 mm

TLI-LIB40      4 mm

## TLI Temporary Abutment



TLI-TT700 TLI Temporary Titanium Coping, Bridge

TLI-TT750 TLI Temporary Titanium Coping, Crown

## Ti Base



TLI-TB300 TLI Titanium Coping, Bridge, Height 4.85 mm

TLI-TT350 TLI Titanium Coping, Crown, Height 4.85 mm

## Tools and Screws



TLI-ID400 TLI Implant Driver, Length 12 mm



ASMD-300100 Long Angulated Prosthetic Screwdriver, Length 27 mm (Working Length 15mm)

ASMD-300110 Short Angulated Prosthetic Screwdriver, Length 21 mm (Working Length 8mm)



TLI-TBS310 TLI Prosthetic Screw



.Ditron Dental Ltd  
Haofe St. South Ind. Zone. Ashkelon 7878002. Israel 2  
Tel: +972.8.6711841

**[www.ditrondental.com](http://www.ditrondental.com)**

Ditron Dental's quality system complies with international quality control standards: ISO 13485:2003/2012 – Quality Management System for Medical Devices, ISO 9001:2000 – Quality Management System and CE Directive for Medical Devices 93/42/EEC.

All products are 510 (k) cleared by the FDA.

All rights are reserved.

Warning: only a licensed dentist should use these products.

